



Be Considerate

*This is strictly a **Day Use Area Only**.

***No Camping** is permitted within the **Junction Sheep Range Provincial Park** or on the adjacent private property of the **Riske Creek Ranches**.

*The **nearest camping** is at Becher's Pond Forestry Recreation Site or the Chilcotin Lodge, a 15 minute drive north on Hwy 20.

*Keep **pets under control**, they may otherwise chase or injure wildlife or cattle.

*Keep **IT CLEAN!** Take out your garbage, if others haven't, take it out too.

***REPORT any abuse** of the environment and its wildlife to the nearest conservation officer.

Record vehicle license numbers if you are able.

Respect Wildlife and their Habitat

*Stress is harmful to animals. Keep your distance.

Respect their den sites and nesting areas.

*Wild animals may be dangerous if they feel threatened or have young.

ALWAYS KEEP YOUR DISTANCE.

Leave young animals, the mother is probably near by.

*Nesting birds are very sensitive to disturbances.



Some birds molt (lose their flight feathers) after nesting. They must grow new feathers before they can fly. Roosting and hibernating bats are very sensitive to being disturbed.

TRAVELING

The Junction road, open April 1 to November 30, is **a rough road and very hazardous when wet**.

It is best suited to a 4 wheel drive or foot traffic.

THIS PRODUCTION BROUGHT TO YOU BY the Cariboo Chilcotin Conservation Society

"Working to ensure the preservation and maintenance of healthy, functioning ecosystems.

1.250.398.7929, or ccentre@stardate.bc.ca

Unit 201, 197 2nd Ave N, Williams Lake BC, V2G 1Z5

Web Site: <http://www.cconserv.org/>

Junction Sheep Range Provincial Park and Public Trail System



The **Junction Sheep Range Provincial Park** was created to protect critical **California Bighorn sheep** habitat. Originally designated as a Wildlife Management Area in 1975, the WMA was created through an exchange of lands with **Riske Creek Ranching** for other lands and grazing rights. In 1995 the Junction Sheep Range was legislated as a **Class A Provincial Park**. It represents a nationally significant **grassland ecosystem** which it is vital we conserve.

The Park is working on ways to **restore and enhance grasslands** to provide the best possible habitat for bighorn sheep and other grassland species. Mule deer, coyote, fox, black bear, cougar, bald and golden eagle, long billed curlew, snowshoe hare, white-throated swifts, rock wren, rosy finches, blue birds, meadow larks, spotted bats, sharp tailed grouse, flammulated owl, and rubber boa, are a few of the species inhabiting the JSRP. The lush, blue bunch wheat grass, sagebrush, rabbit brush and prickly pear cactus make up the grasslands of the JSRP. The conservation of this area is a prime concern for the preservation of all of these species, including several red and blue (rare and endangered) species!

GRASSLANDS ARE FRAGILE. Long lasting damage occurs when they are driven on. Drive only on designated roads. **Noxious weeds** cause irreversible damage to natural grasslands, **always stay on designated roads** and report any sightings of noxious weeds to the local Parks office.

These conservation efforts supported by the:

Cariboo Chilcotin Conservation Society

Riske Creek Ranching

WL Sportsman's Association

BC Parks / WLAP

Upland Birds Society

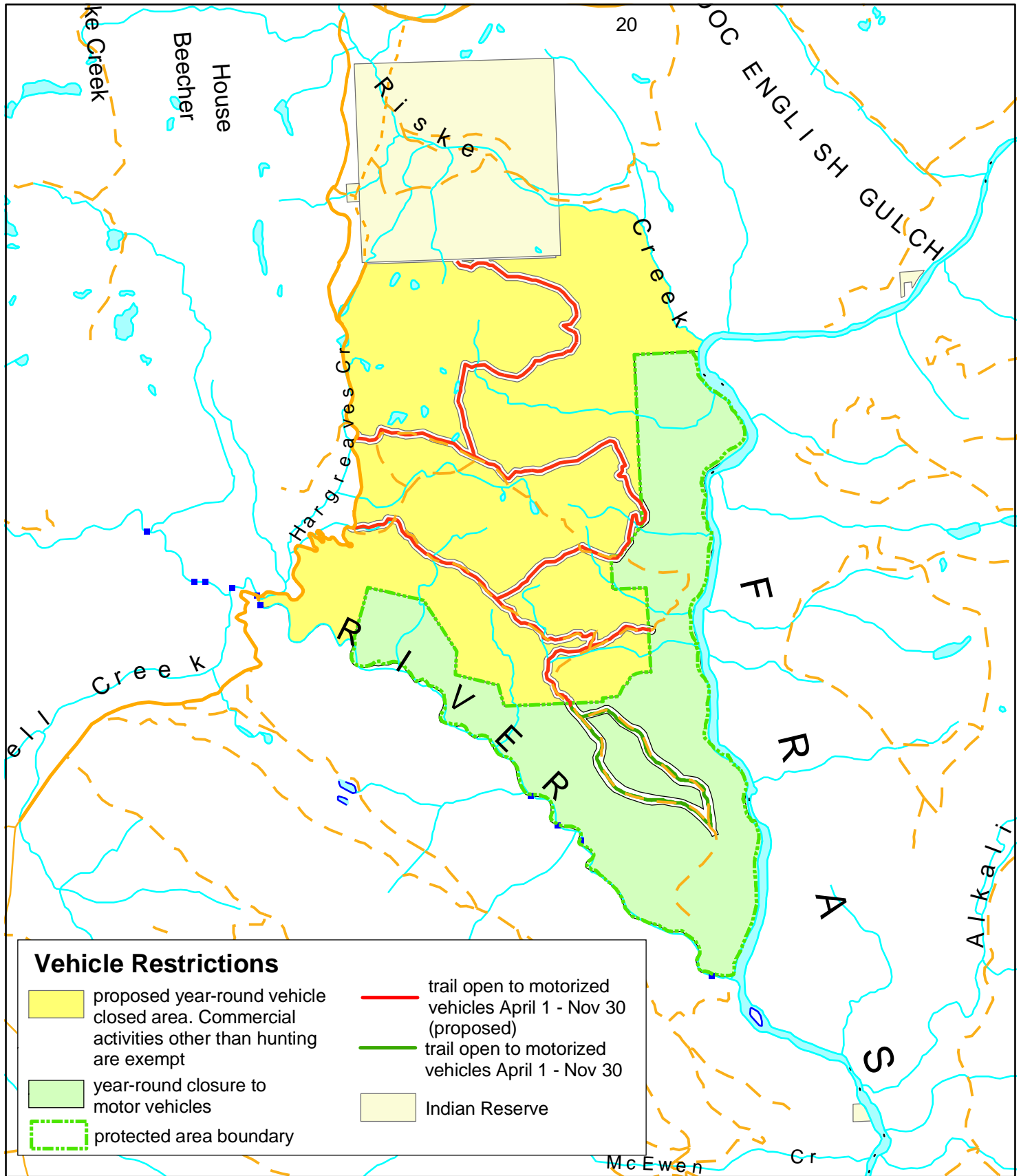
BC Wildlife Federation / Wilderness Watch

Wild Sheep Society of BC

WL Field Naturalists / DU Canada

Grasslands Conservation Council of BC

Junction Sheep Range Provincial Park Vehicle Restriction Area



Produced by the
Ministry of Sustainable Resource Management
Williams Lake, British Columbia

Projection is standard Albers, NAD83, Spheroid GRS1980
1st Standard parallel 50 00 00N
2nd Standard parallel 58 30 00N
Central Meridian 126 00 00W
Latitude of projection origin is 45 00 00N

